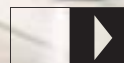


# Variflex

DORMA Hüppe  
Movable Walls for  
modern interiors



## Intelligent solutions for sophisticated interior design requirements



Modern living areas should provide those who use them with an enhanced quality of life. Movable partition walls from the DORMA Hüppe Variflex system offer the best possible solution there is.

Regardless of their characteristics and function, rooms can be effortlessly partitioned, made smaller, larger or re-proportioned to suit individual requirements. Any area, from a small conference room to a large exhibition hall, can be optimally adapted to suit varying numbers of users. Excellent sound insulation properties allow different events to be held in adjacent areas without any intrusive noise.

This flexibility is the key to creating the perfect ambiance in any situation, distinguished by a broad range of surface finishes and coverings to satisfy any creative or aesthetic demand. Mobile partitioning coupled with flawless operating technology enables DORMA Hüppe to provide the ideal solution every time, ensuring that the people using the rooms feel at home, whatever the setting.

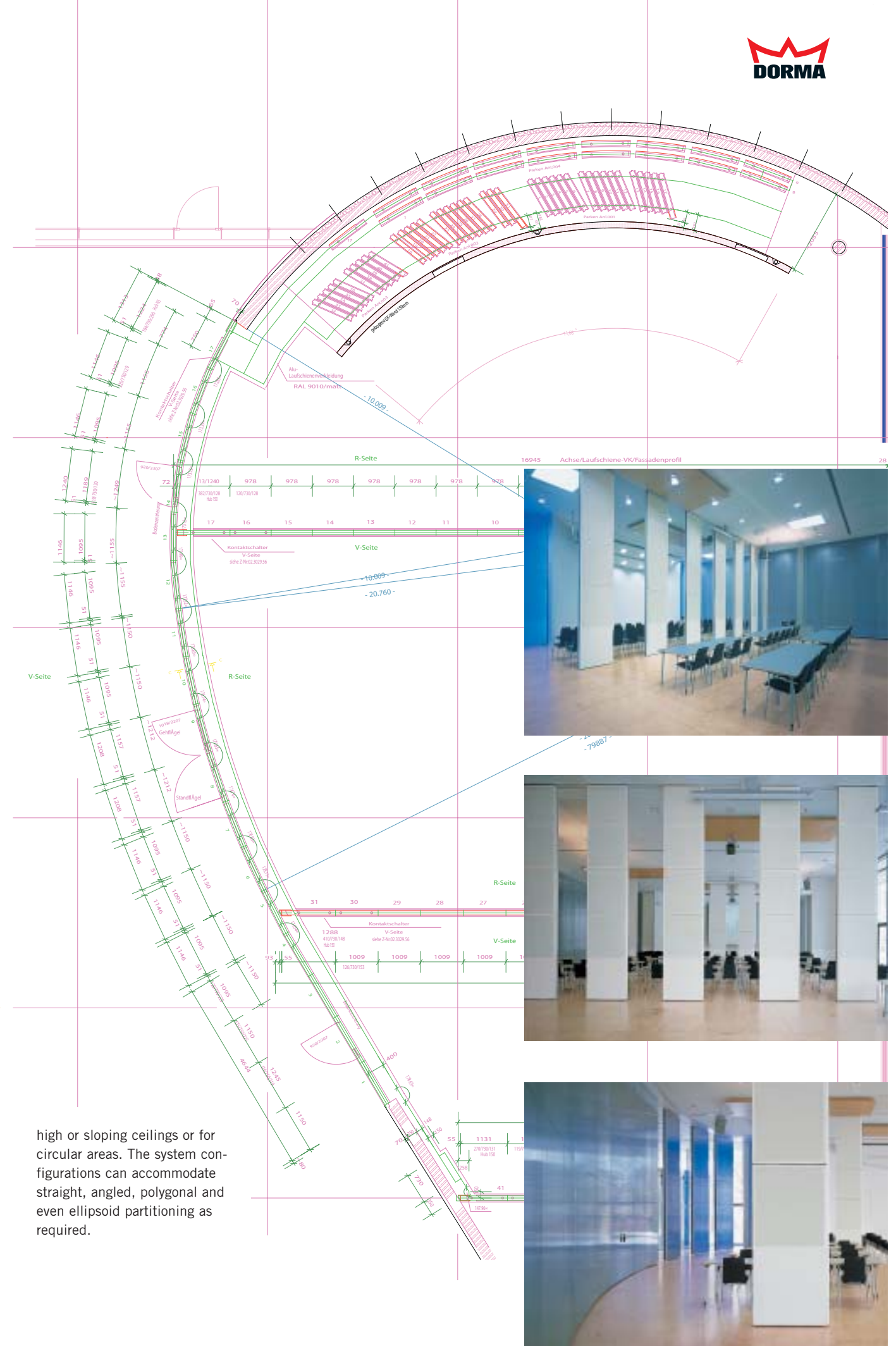


## Customised flexibility for multi-functional layouts

From system configurations to practical considerations, with Variflex from DORMA Hüppe, the architectural design options are almost limitless. Intelligent partitioning creates areas perfectly customised to the given demands and functional requirements. This guarantees the highest degree of flexibility in daily use. The more complex

the questions asked of a mobile partitioning system, the louder the call for the DORMA Hüppe Variflex answer. The Variflex system can adapt even those areas with the most unusual dimensions to suit individual requirements. The diversity and flexibility of the system guarantees perfect solutions every time, even for rooms with





high or sloping ceilings or for circular areas. The system configurations can accommodate straight, angled, polygonal and even ellipsoid partitioning as required.







## Functional design and aesthetics coupled with superior quality

A room is characterised primarily by its visual appearance. As a result, a room partitioning system should also blend in harmoniously with its given surroundings. With an almost infinite choice of designs and colours to cater for the most sophisticated design and layout requests, DORMA Hüppe Variflex fulfils this requirement admirably. Comprehensively translating creative and artistic ideas into reality, the Variflex system counters the most intricate aesthetic needs with a

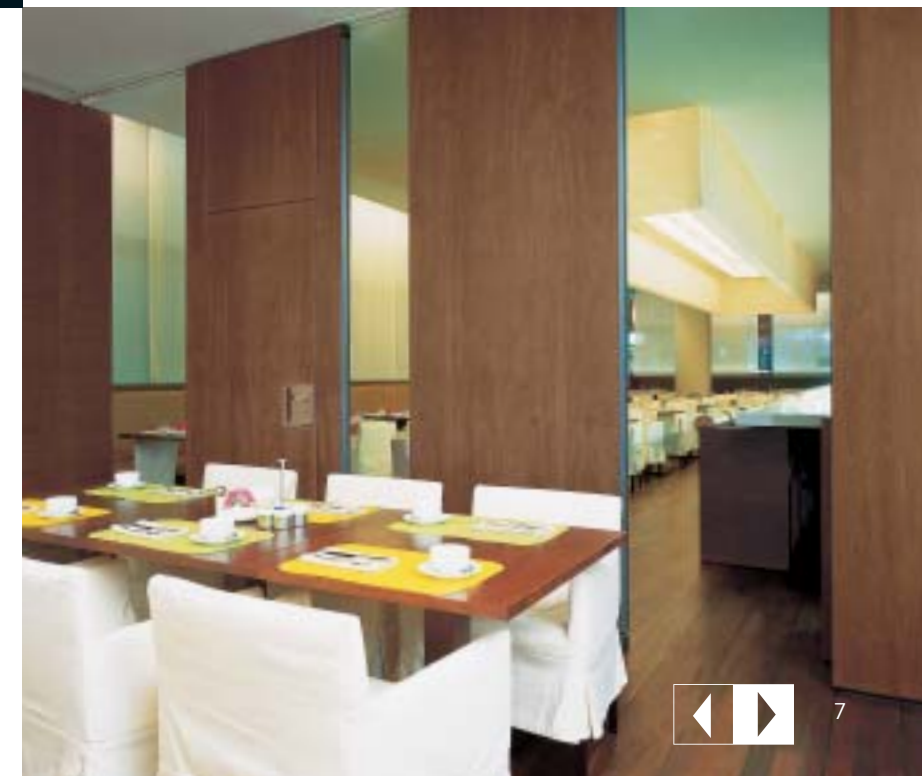
multitude of design options. The high-quality materials and their visual effects are unsurpassed.

When it comes to the design-oriented configuration of today's living areas, it is no wonder that DORMA Hüppe Variflex has a role to play in all planning considerations. But that's not all. The standard of craftsmanship embodied in DORMA Hüppe Variflex systems is also second to none. This applies to the widest array of

materials, from hardwood veneers through fabric coverings to laminated surfaces. Only this close attention to detail can guarantee the desired visual appearance for many years to come.

The use of exquisite materials and various material combinations can be particularly appealing. Wood and glass, wood and metal, for example, wood and stainless steel, and even different woods can all be combined, thus offering an

abundance of attractive design options with a visual effect that is both striking and immediate. It all comes down to the highly effective interaction of design and technology: clear evidence of the unparalleled ability of the DORMA Hüppe Variflex system to enhance today's interiors.







## Greater flexibility and convenience – automatically

Variflex offers the option of automatic or semi-automatic operation to allow rooms to be adapted quickly and easily.

Both alternatives are tried and tested solutions for everyday use: they are extremely economical to operate, thus reducing costs,

and also enjoy proven functional reliability as an important complementary aid to today's modern conference technology.



### The system advantages of semi-automatic (HA) technology

- Electronically controlled sealing strip operation; the partitioning is moved manually; time and energy savings are made by eliminating crankwork
- Time and cost savings increase system economy; the precise contact pressure of the sealing strips is assured at all times
- Generally enhanced user convenience
- Minimal additional costs
- Unlimited layout configurations; stacking and parking as for the manual system
- Floor-mounted guides and special track rails are not required
- Door and window elements can be fitted

### The system advantages of automatic (EM) technology

- The perfect combination of DORMA and Hüppe: unmatched DORMA drive technology coupled with high-quality Hüppe panels
- At the push of a button: automatically controlled panel travel and sealing
- Areas can be partitioned off or opened up quietly, effortlessly and extremely quickly
- Any "partially open" and "partially closed" positions can be adopted
- Rapid traverse travel
- The intelligent control system and power limitation facility ensures maximum safety
- Several systems can be combined
- The control system can be easily integrated with building systems
- Only marginally more expensive than the manual or semi-automatic options
- Existing manual systems can be retrofitted as automatic systems
- Almost unlimited spatial layouts: even segmented, polygonal and round/circular layouts are possible
- Door and window elements can be fitted

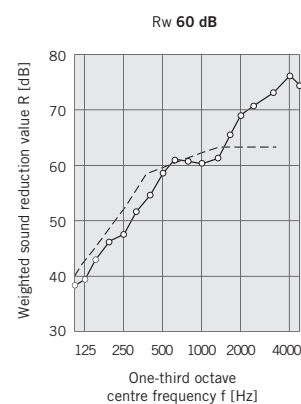


## Leading the field in sound insulation

As well as having the function of visually subdividing areas, movable partition walls also have the role in many applications of filtering acoustic signals in order to prevent noise disturbing the users of the other rooms. Room partitioning with reliable acoustic insulation properties is a must, particularly when events run concurrently.

The outstanding craftsmanship of the DORMA Hüppe Variflex system ensures unsurpassed sound insulation without compromising ease of use.

The sound insulation values of DORMA Hüppe Variflex are constantly being tested and confirmed by internationally recognised testing authorities; both a challenge and an incentive to achieve even better results through new developments. As freely oscillating elements, the clip-on fascia boards block the transmission of structure-borne noise, thus ensuring extremely high sound insulation values. The fascias can be replaced at any time should this be required due to damage or to match new décor. Special acoustic panels manufactured with slits or holes encourage sound absorption and reduce reverberation.



These advantages, coupled with the high quality standards and the optical effect of DORMA Hüppe Variflex, greatly enhance user comfort and offer incomparable benefits for areas used for musical events and larger conferences.

In order to ensure maximum levels of sound insulation in respect of a project, we recommend contacting DORMA Hüppe during the planning

phase so that any acoustic issues such as noise paths or the use of a step noise reducing joint in the flooring can be discussed.



## Fire prevention precautions offer total security

Catastrophic and devastating fires feature again and again on news bulletins from around the world. In many instances, the buildings concerned have lacked adequate fire prevention measures. Fire safety is of paramount importance for protecting human life: second-rate solutions are simply not an option. Fire prevention and protection must be guaranteed, above all in public areas that are in constant use. Safeguarding human life must be the top priority at all times.



DORMA Hüppe Variflex offers intelligent solutions that are specifically adapted to meet preventative fire safety requirements and afford better conditions for dealing effectively with hazardous situations – not only for function and conference rooms but also for reliable fire protection on the high seas, to which special provisions apply.

In this latter context, the installation of a DORMA Hüppe Variflex system, for example in the restaurant area, fulfils the IMO and U.S. Coast Guard standards applicable to ocean-going vessels and their particular requirements. Whether on land or at sea, the technical perfection of safety systems used by DORMA Hüppe means that Variflex can make a valuable contribution to protecting human life in the event of fire.







## A multitude of element types for every need

As a component offering ideal structural solutions in the creation of attractive living areas, mobile partitioning is having to satisfy increasing demands from an ever-widening range of applications.

be curved or angled, and can also accommodate special features such as sloping ceilings. Whatever the issue, DORMA Hüppe Variflex can provide the best solution.

However, the various element types available within the Variflex system from DORMA Hüppe can be used in applications of almost any kind and in the most widely diverse settings. Variflex systems can match unique design features, satisfy special design specifications and incorporate door elements or a variety of window elements. The partitioning can



Full wall element



Telescopic element (flush or with overlapping thrust unit)



Angled element



90°-corner element



Curved element



Double pass door



Pass door within element



Pass door full height, fixed



Vision element



Pass door with vision panel



Special element for non-load bearing ceilings and structures

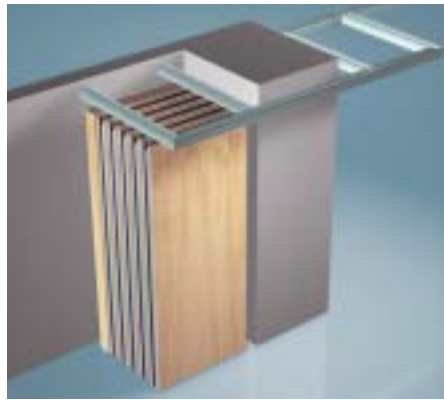


## Variable track systems for modern architectural planning

In their parked position, the individual Variflex elements together form a compact stack. So they only take up a minimal amount of space in any room

(for examples, see diagram). Manually and automatically operated systems have different requirements, which is why we recommend prior consultation

at the planning stage. Whatever the final decision, DORMA Hüppe Variflex offers wide flexibility.



Parking layout A



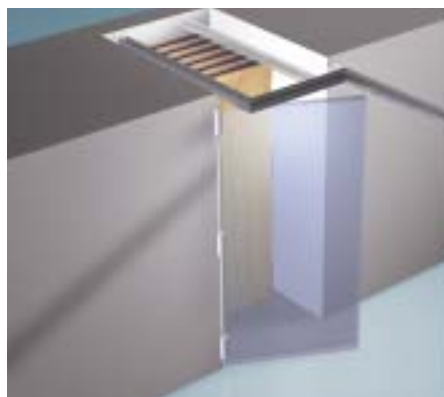
Parking layout D



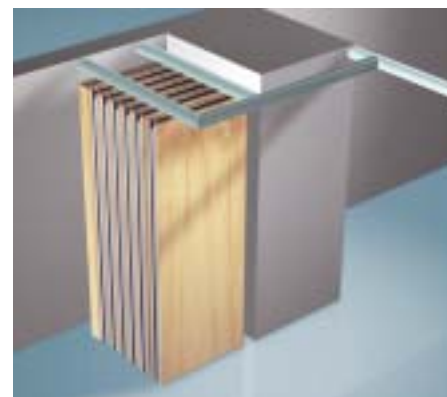
Parking layout B



Parking layout E



Parking layout C

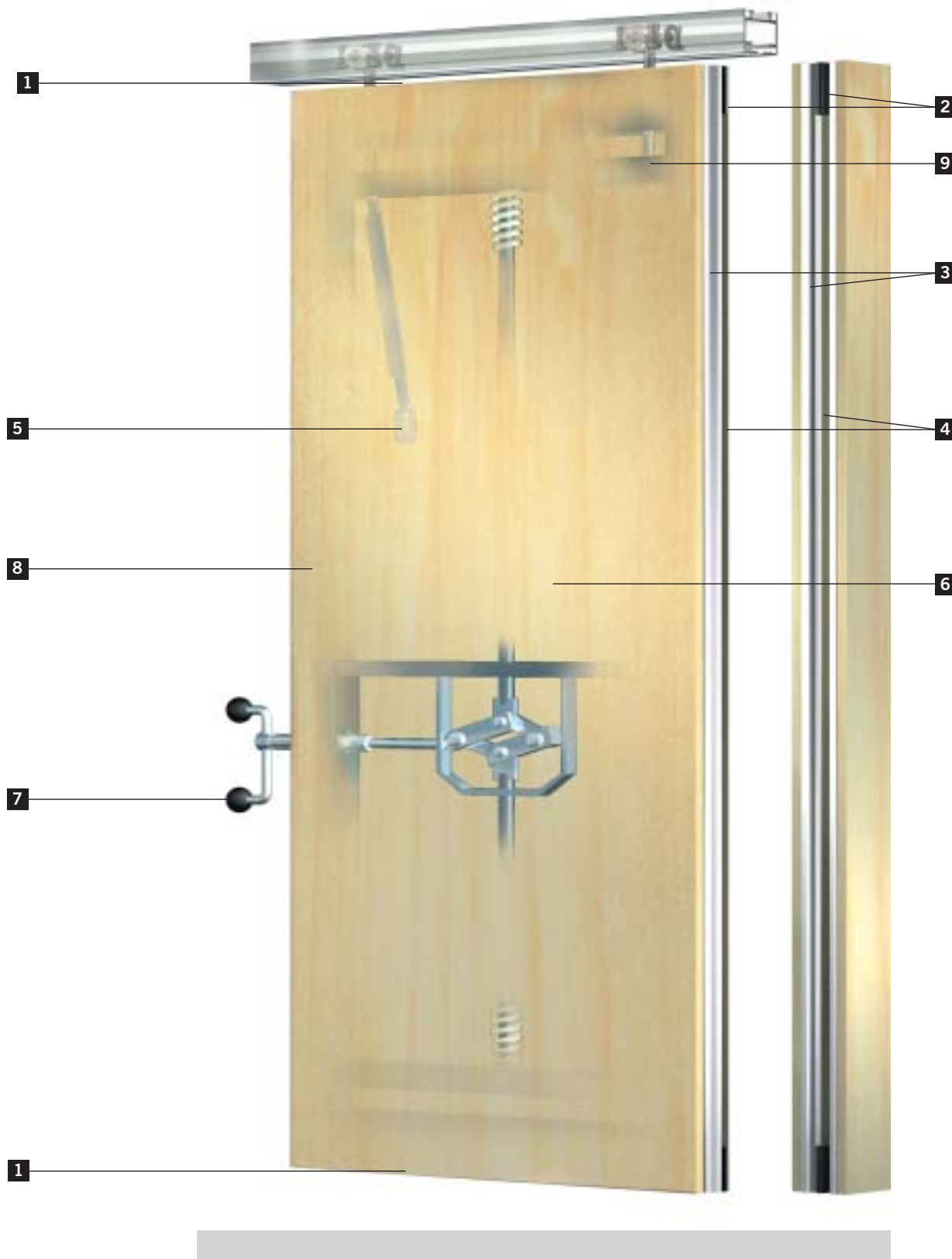


Parking layout F





## The sum of the advantages in detail



### 1 Horizontal seals

The principle of double-skin construction is applied consistently in the seal area in order to ensure maximum sound insulation. A spindle mechanism presses extendable, spring-loaded, double seals against the floor and the ceiling track. Any irregularities in the flooring are offset by spring-loaded double-chamber seals. The contact force of the sealing strips does not place excessive strain on screed floors, but does ensure that the Variflex system is sufficiently stable to prevent the panels moving, even in the event of an attempted forced entry.

### 2 Corner seals

Variflex resolves the technical issue of corner seals with specially designed, corner pieces that also reinforce the stability and sound insulation properties of the system.

### 3 Vertical seals

All Variflex models have flexible, vertical sealing strips to ensure the best possible seal for maximum sound insulation. The strips extend some distance into the panels to ensure positive interlock.

### 4 Magnetic strip

The individual panels are centred via the magnetic strips to guarantee sound positive locking and sealing (with exception of Standard).

### 5 Fascia boards

The acoustic fascia boards are clipped on as freely oscillating panels to ensure optimum sound insulation with minimum system weight. The fascias can be replaced without removing the panels. Their surfaces can be coated or covered with any conventional interior design material.

### 6 Sound insulation material

The various Variflex models can be fitted with additional insulation materials according to sound insulation requirements.

### 7 Operating handle

In manual systems, the element sealing strips are operated using a crank. The crank has as a captive bayonet fitting to prevent it from being pulled off. The bayonet arrangement is easy to disengage and prevents crank slippage.

### 8 Frames

The frame is made from torsionally stiff aluminium hollow-chamber profiles and sectional steel tubing. Transverse forces will not, therefore, cause deformation of the frame. Combined with the panel mounted in acoustically free suspension, Variflex elements are able to offer both exceptional strength and outstanding sound insulation.

### 9 Roller assemblies

The dampening track roller assemblies prevent the transmission of impact forces and operating noise, so protecting the element, rail and carrier. (Exception: Standard)

TEF is synonymous with technical perfection that is unmatched by any other



manufacturer. TEF describes the flush edge connection of the last wall panel that serves



to form an area of visual harmony for an outstanding architectural solution.



The automatic EM rail track system ensures efficient traversing speeds together with particularly smooth and low-noise operation of the elements. Both curved configurations and a combination of several systems are possible.



The type R rail system combined with cross-roll carriers is particularly suitable for right-angled branches and intersections. The track rollers mounted in ballbearings exhibit extremely quiet operation and are also maintenance-free. The system is ideal for a very wide range of different layouts and high element weights. Support rollers in the branch junctions and intersections prevent the elements from dropping as they pass through for increased user convenience and easier handling.



The type K rail system is a new compact alternative offering all the advantages of minimized dimensions. The mechanically coded branch junction technology with curves and switches ensures easy operation as the elements are transferred to their appropriate positions. Curved system configurations are possible.



## The best basic models for perfect partitioning solutions

DORMA Hüppe Variflex can offer the most appropriate partition wall for any individual application. There are four basic models available, each with a wide range of different options. The Variflex models can be selected according to sound

insulation requirements, fire protection considerations and visual design needs, thus providing an optimal partitioning solution.

### Variflex Top 120

The best sound insulation values and the highest stability to meet specific requirements. Optimally suited to rooms with high ceilings.



### Variflex Top 100

The top model in terms of function and design. With a large choice of finishes for any application. Steel sheet based cover panels for fire protection ensure a particularly robust system.



### Variflex Solid

The function-oriented Variflex model for everyday use.



### Variflex Standard

Economical partitioning for average sound insulation requirements. Effortless and easy to operate.



Dimensions*	Element thickness	mm	120	100	100	85
Manual (M)	Clear height (min./max.)	mm	2,000/14,500	2,000/14,500	2,000/14,500	2,000/4,100
	Element width (min./max.)	mm	600/1,220	600/1,220	600/1,220	600/1,220
Semi-automatic (HA)	Clear height (min./max.)	mm	2,000/6,000	2,000/6,000	2,000/6,000	-
	Element width (min./max.)	mm	750/1,220	750/1,220	750/1,220	-
Automatic (EM)	Clear height (min./max.)	mm	2,000/4,000	2,000/4,000	2,000/4,000	-
	Element width (min./max.)	mm	750/1,220	750/1,220	750/1,220	-
Design	Framed construction		Aluminium-steel	Aluminium-steel	Aluminium-steel	Aluminium-steel
	Panel fixing		Freely oscillating	Freely oscillating	Freely oscillating	Freely oscillating
	Element interconnection/ design of the vertical profiles		Aluminium profile with integrated magnetic strip and external sealing lips	Aluminium profile with integrated magnetic strip and external sealing lips	Aluminium profile with integrated magnetic strip and external sealing lips	Aluminium profile with sealing lips
Finish and trim	Panel design with <i>K-type edge</i>		With visible surface edging	With visible surface edging	With visible surface edging	With visible surface edging
	Panel design with <i>U-type edge</i>		With protective surrounding trim	With protective surrounding trim	With protective surrounding trim	With protective surrounding trim
	Panel design with <i>S-type edge</i>		-	With robust sheet steel skin up to Rw 58 dB	-	-
	Manual model (M)		-	-	Manual operation of the elements and actuation of the sealing strips	Manual operation of the elements and actuation of the sealing strips
	Semi-automatic model (HA)		Manual operation of the elements, electronically controlled extension and retraction of the sealing strips	Manual operation of the elements, electronically controlled extension and retraction of the sealing strips	Manual operation of the elements, electronically controlled extension and retraction of the sealing strips	-
	Automatic model (EM)		Fully automatic operation of the elements and actuation of the sealing strips	Fully automatic operation of the elements and actuation of the sealing strips	Fully automatic operation of the elements and actuation of the sealing strips	-
	Fire protection package <i>F30, F60, F90</i>		-	In conjunction with B1 (F 30) – and A2 (F 60, F 90) – compliant particle board and special sealing compound	-	-
	Fire protection package <i>B 30, A 60 to IMO and US Coast Guard</i>		-	In conjunction with A2 compliant particle board and special sealing compound	-	-
	Horizontal panel joint from element height (mm)		4100	4100 (with steel sheet skin: from 3200)	4,100	-
	Passdoors		Single-leaf following technical clearance from factory	Single-leaf or double-leaf	Single-leaf or double-leaf	Single-leaf
	Window element		Yes	Yes	Yes	-
	Telescopic element design		Sliding portion flush or external	Sliding portion flush or external	Sliding portion flush or external	Sliding portion external
Technical	Weighted sound reduction value Rw determined per EN 20140 in Rw (dB)		58/60	48 to 57 (as S: 58 dB)	44 to 55	34 to 45
	K-value per DIN with maximum sound insulation package (heat transfer coefficient)		0.380	0.664	0.664	0.685
	Contact pressure of the horizontal sealing strips per element in Newton up to		1,500	1,500	1,500	800
	Positive and frictional locking of the vertical element connections		Convex-concave profile form 40 N/m	Convex-concave profile form 40 N/m	Convex-concave profile form 40 N/m	Convex-concave profile form
	Rail type		EM, MR and R-rail	EM, MR, R and K-rail	EM, MR, R and K-rail	R and K-rail

\* Note regarding Variflex dimensions: Larger widths possible on application. Provisional details regarding the element heights/element widths indicated can only be confirmed following consultation with the Design Department.





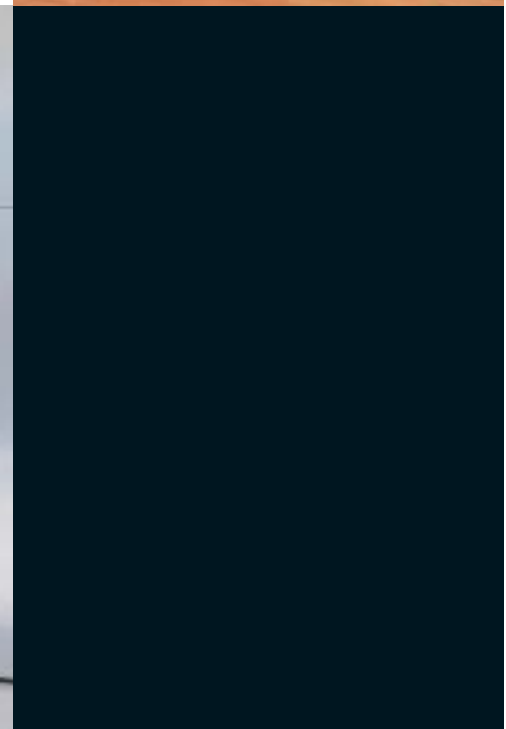
## An unlimited choice of surface finishes

One of the factors which characterises modern interior design is intelligent space partitioning to create an architectural “choreography” of light and shadow. The partition walls are a significant part of the



whole and, with striking surface contrasts, can play a role in an effective overall presentation.

DORMA Hüppe Variflex further enhances the aesthetic appearance with superior-quality surface finishes. A wide array of materials can be marshalled to create quite stunning visual effects. Materials to choose from include real wood veneers that can be ebonised, waxed, brushed or lime-washed. There are laminates and metallic finishes, granite fabric coverings and stainless steel inserts; acoustic, sheet steel and fibreglass surfaces; glass inserts, mirrors and textile coverings. And many more options besides. Whatever the requirement, we have the surface finish to match. DORMA Hüppe Variflex offers the best solution every time.



**We design  
space and function**

DORMA Hüppe creates more scope for enhanced quality of life with its other systems as well – such as Varitrans with its horizontally moving glass panels, Varitec with vertically traversing glass elements, and Variplan folding walls that pull out to give a perfectly flush and flat wall surface. Ideal design solutions to suit every need.



**Door Control**



**Automatic**



**Glass Fittings and Accessories**



**Security/Time and  
Access Control (STA)**



**Movable Walls**

**DORMA UK Ltd.**  
Hüppe Movable Walls Division  
Wilbury Way  
Hitchin  
GB-Hertfordshire SG40AB  
Phone +44 1462477600  
Fax +44 1462477601  
movablewalls@dorma-uk.co.uk  
www.dorma-uk.co.uk

**DORMA Hüppe Asia Sdn. Bhd**  
P.O. Box 55  
PLO 217 Kawasan Perindustrian  
Senai IV  
MY-81400 Senai, Johor  
Phone +60 7598 5730  
Fax +60 7598 5729  
www.dorma-hueppe.com

**DORMA Polska Sp. z o.o.**  
Division Hüppe Movable Walls  
ul. Finalowa 9  
PL-05-090 Raszyn  
Phone +48 22 7201032  
Fax +48 22 7201163  
huppe@dorma.com.pl  
www.dorma.pl

**DORMA Hüppe**  
Raumtrennsysteme GmbH + Co. KG  
Industriestraße 5  
D-26655 Westerstede/Ocholt  
Postfach 2190  
D-26648 Westerstede  
Phone +49 4409 666-0  
Fax +49 4409 666-489  
info.hueppe@dorma.com  
www.dorma-hueppe.com

